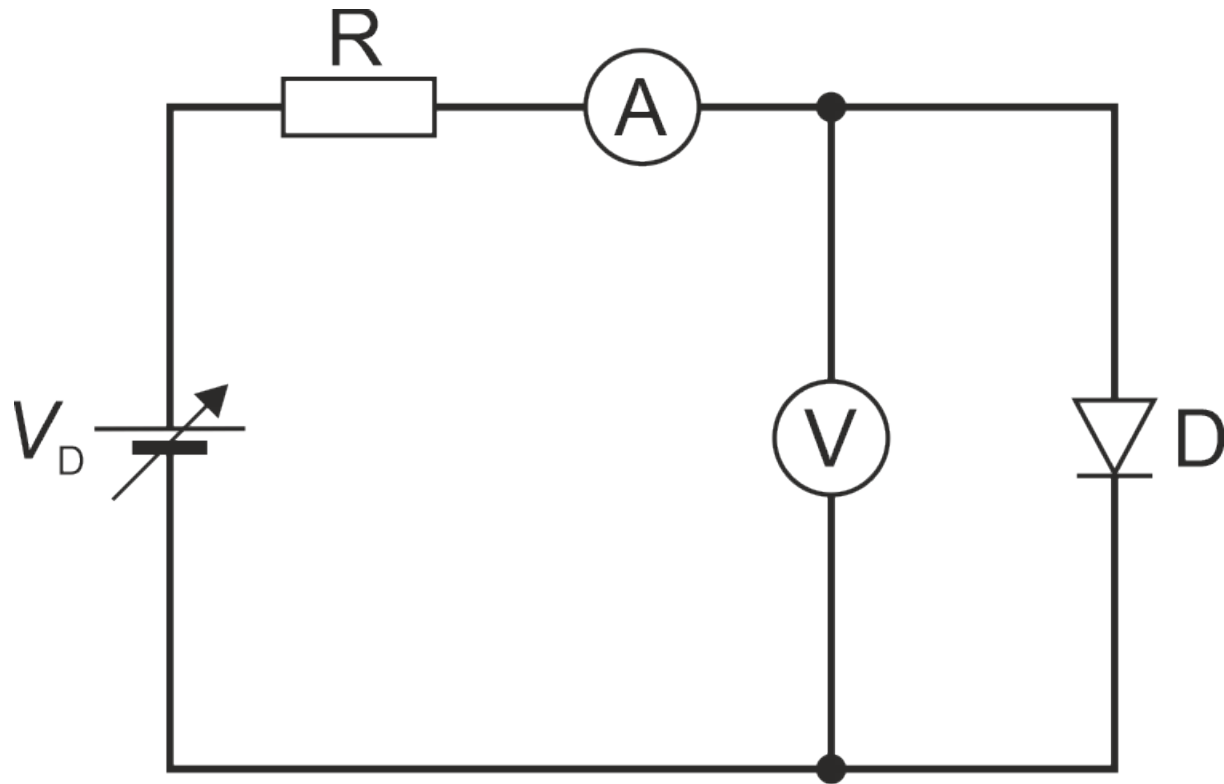


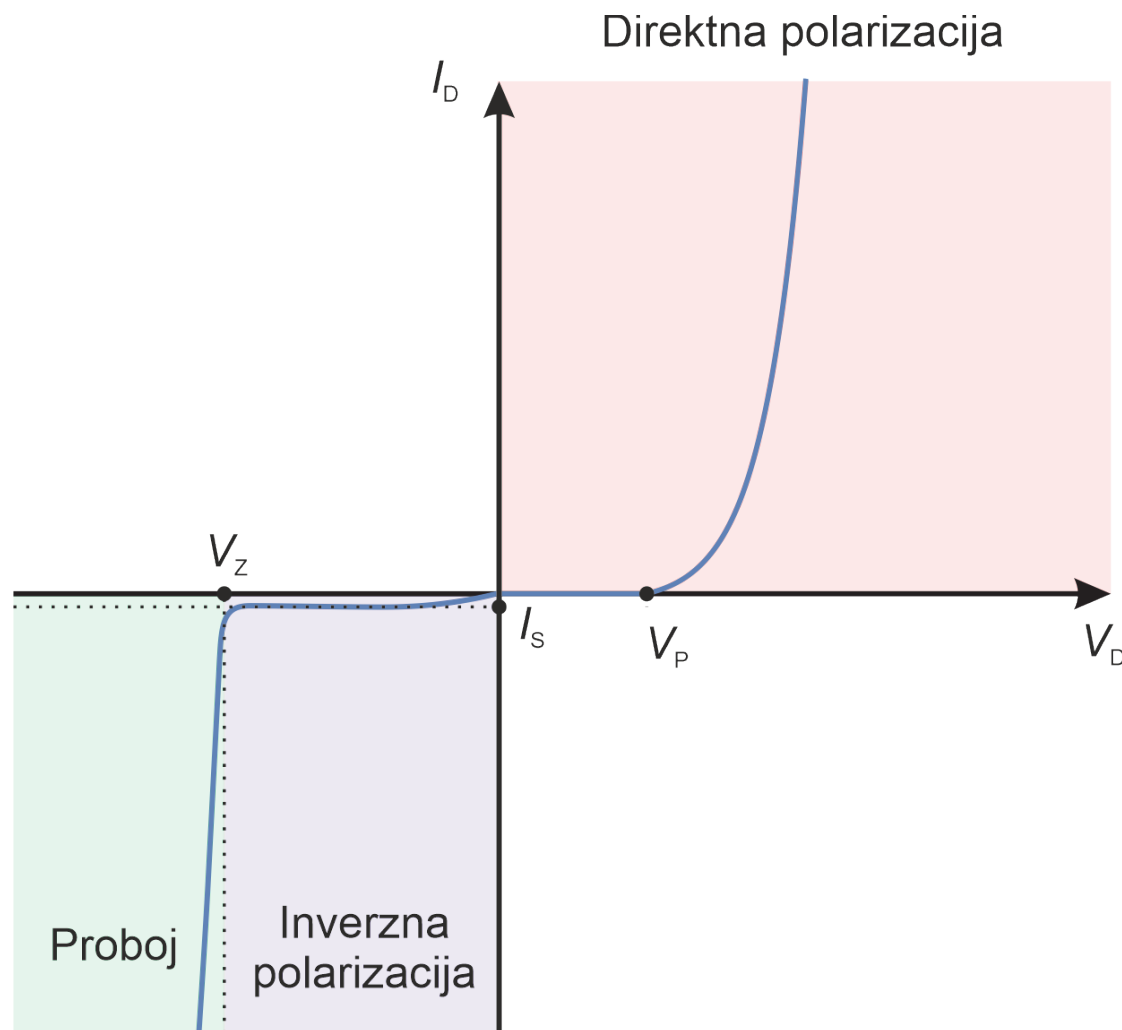
Karakteristike poluprovodničkih elementa

Marko Dimitrijević, Dragan Mančić

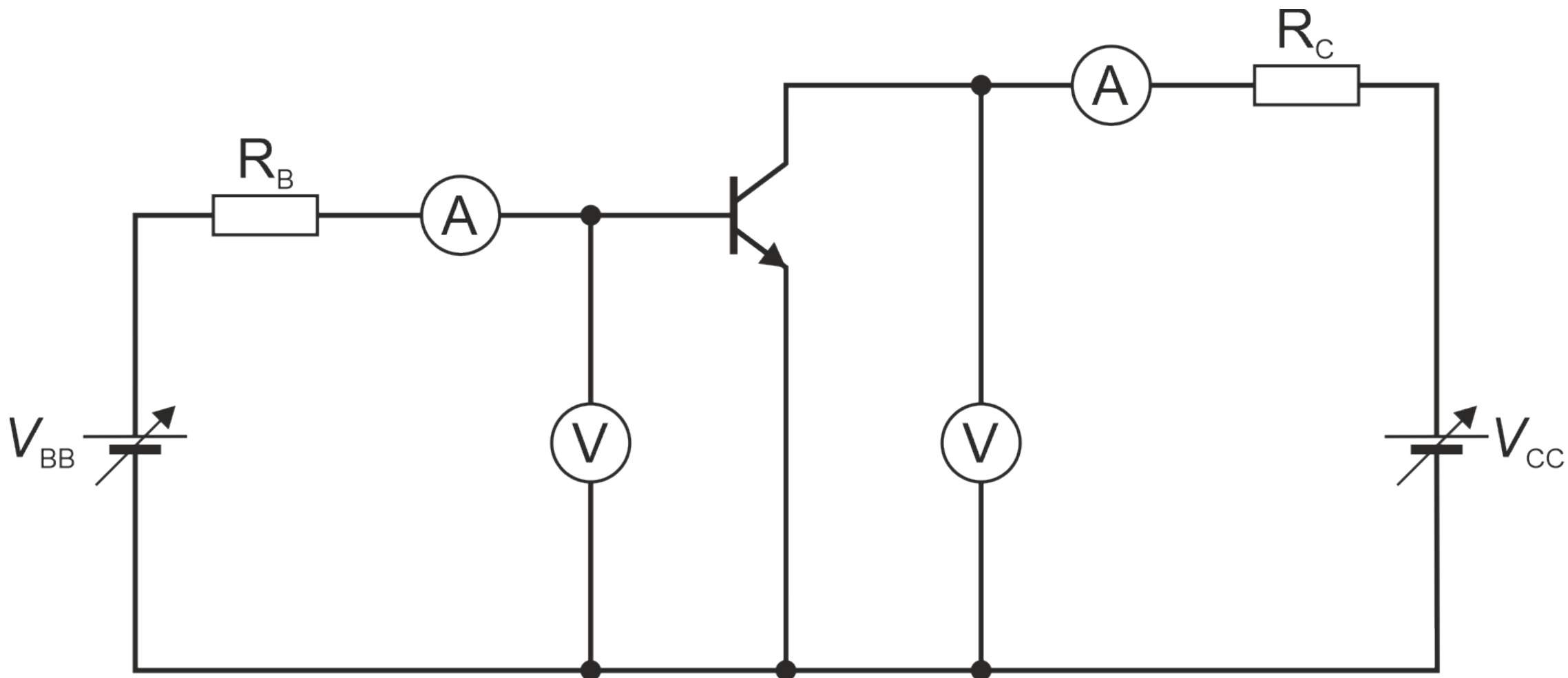
Merenje karakteristik dioda



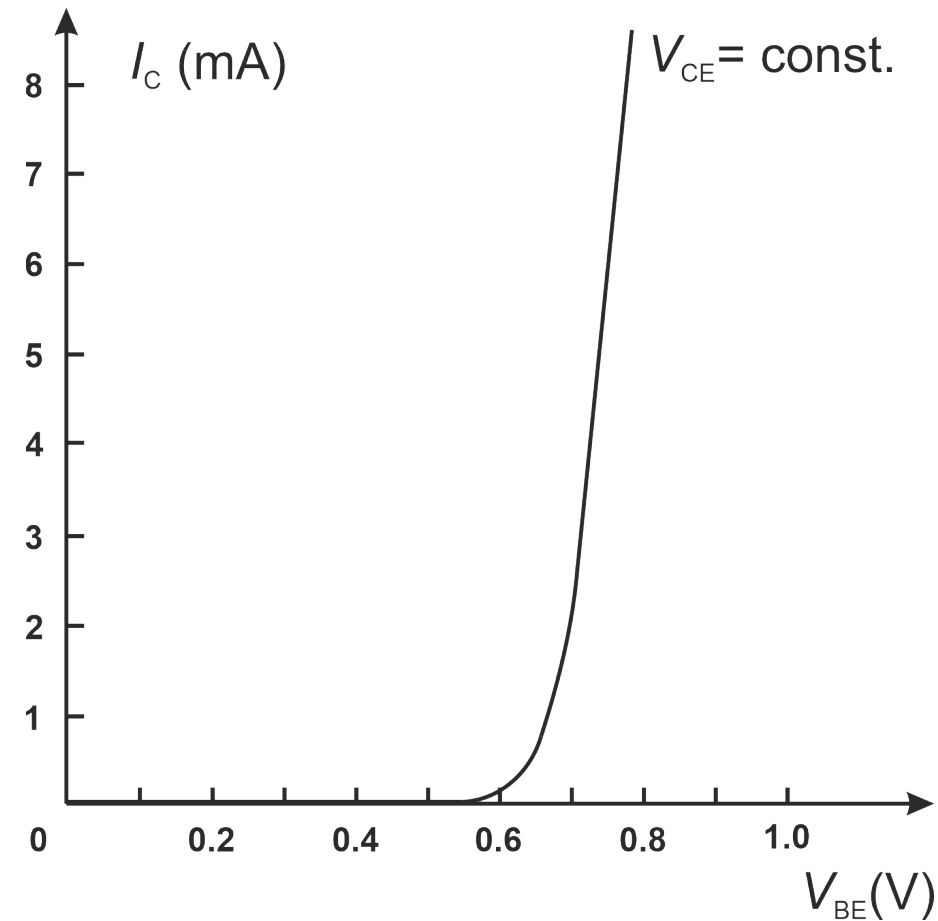
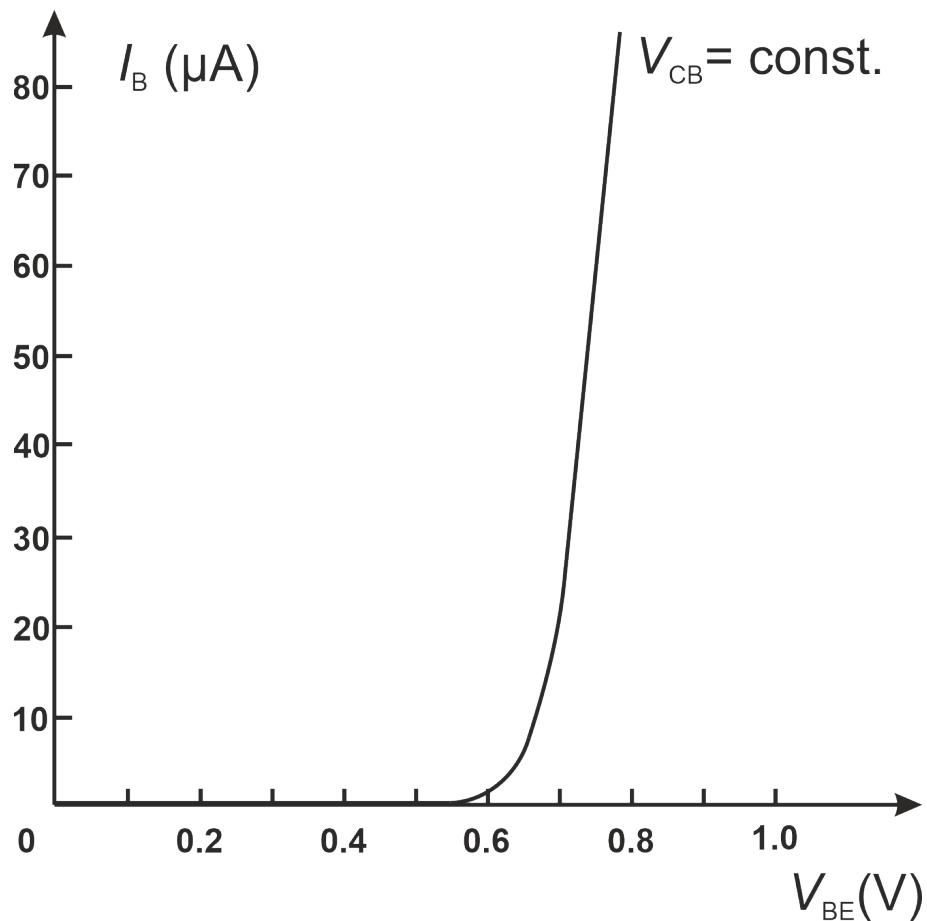
Strujno-naponska karakteristika PN dioda



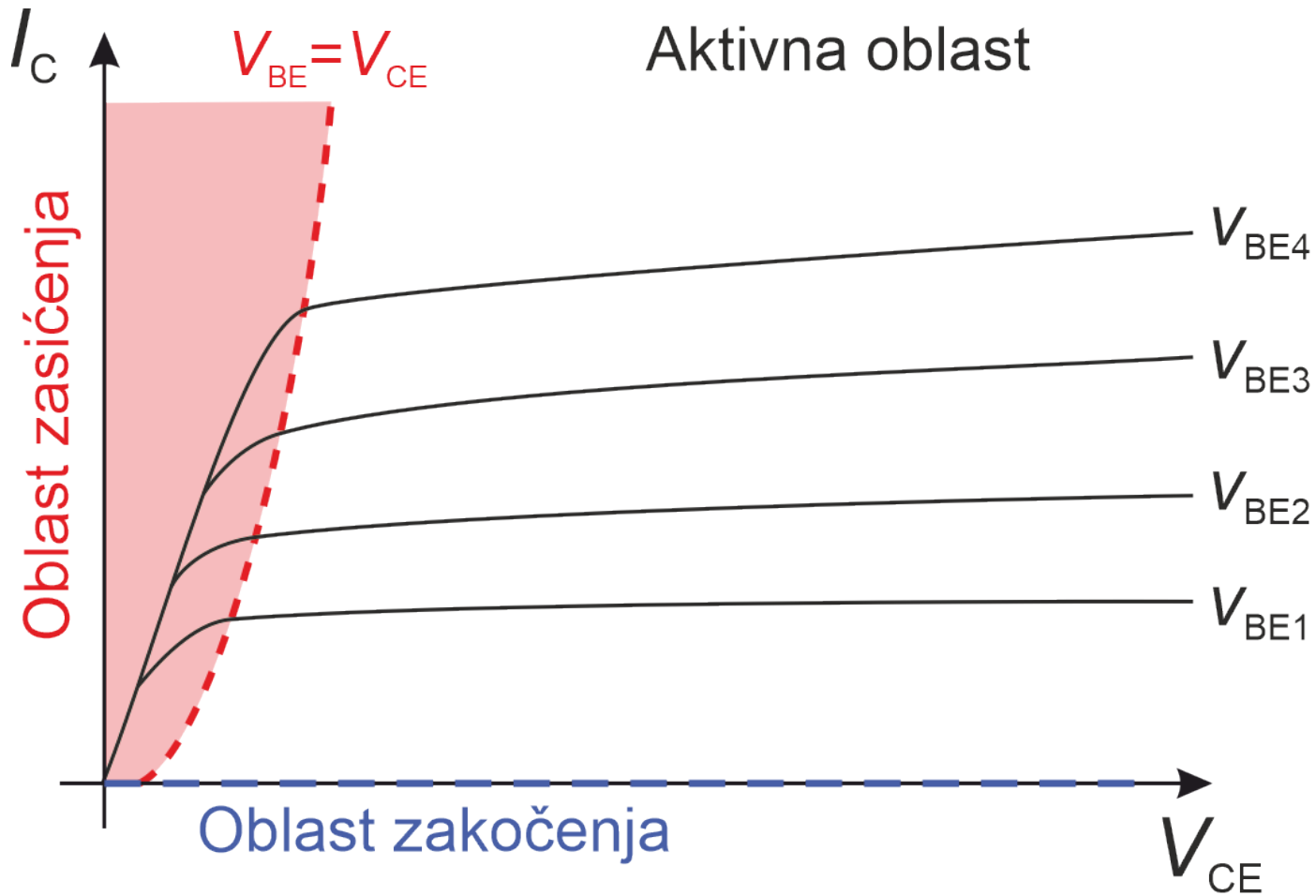
Merenje karakteristika bipolarnog tranzistora



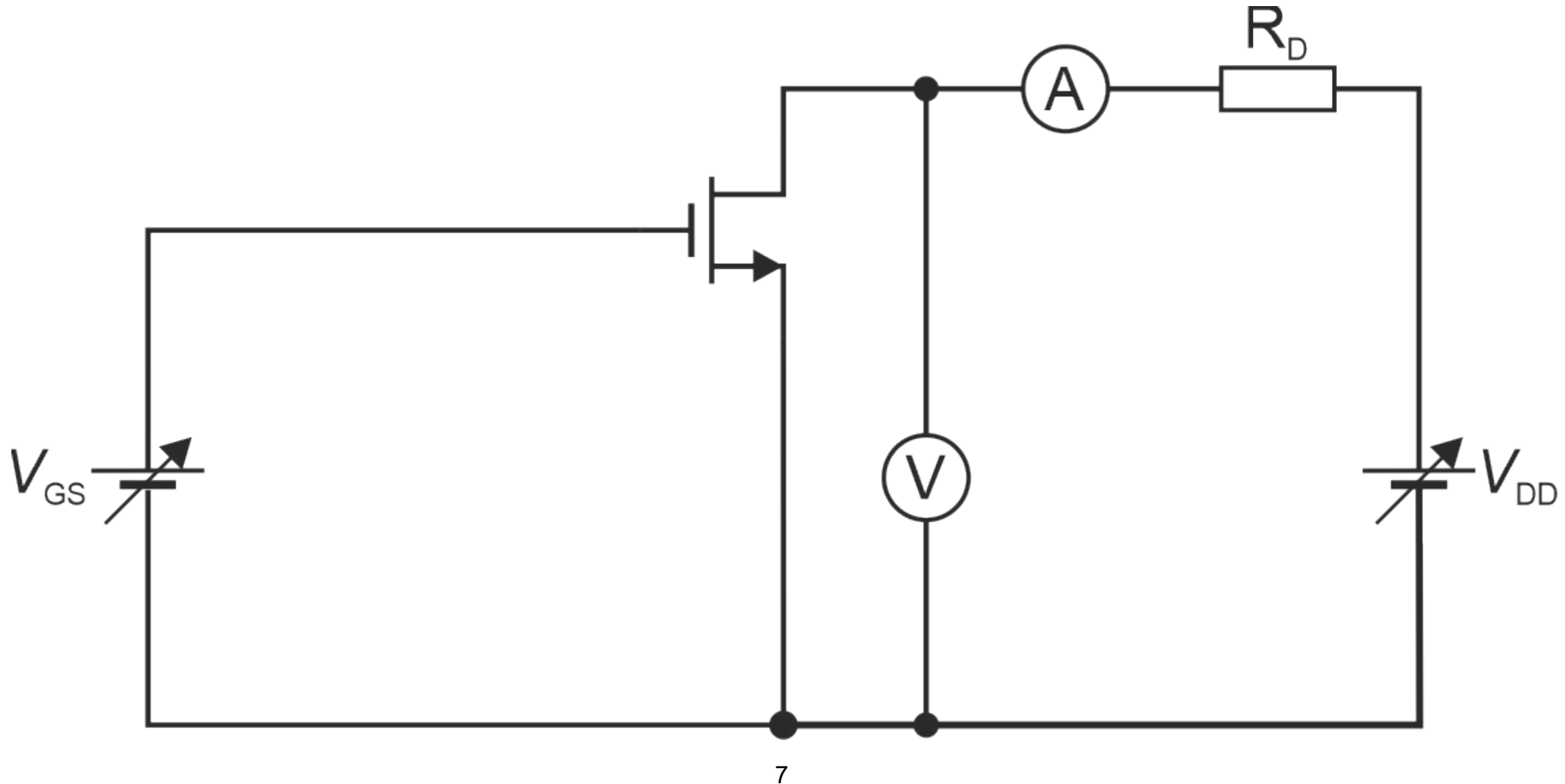
Zavisnost struja baze I_B i kolektora I_C od napona V_{BE}



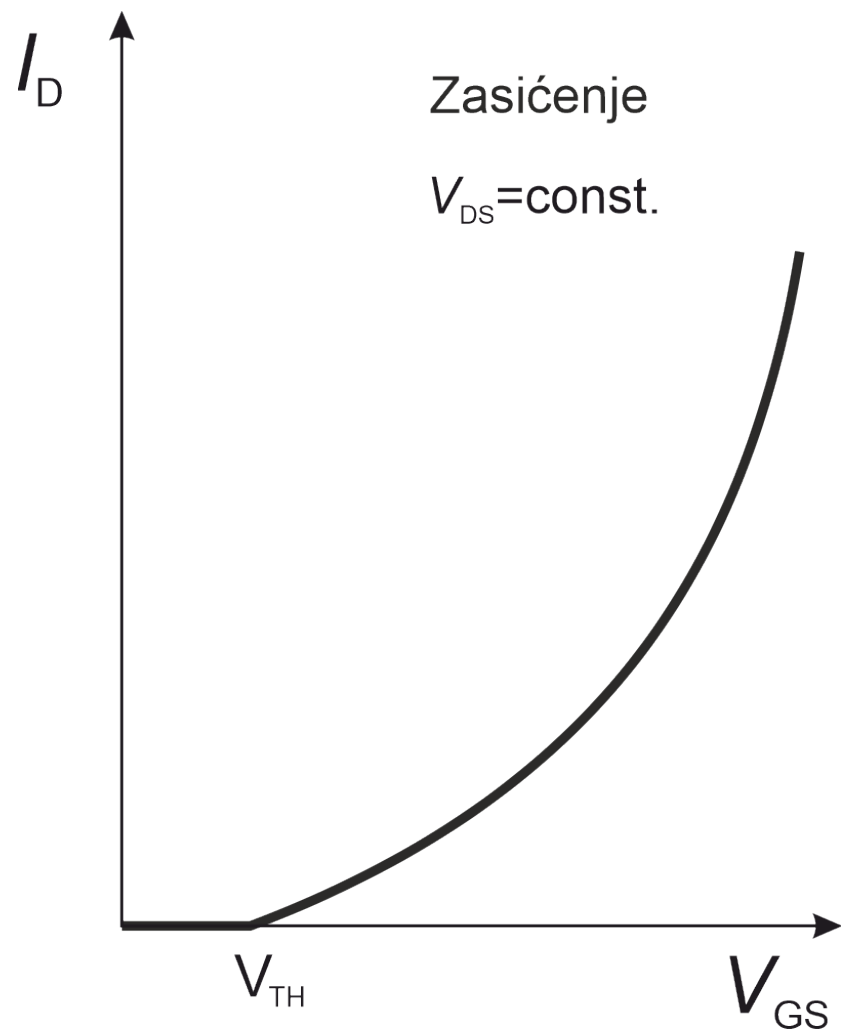
Izlazna karakteristika bipolarnog tranzistora sa označenim režimima rada



Merenje karakteristik MOS transistor



Režim zasićenja – zavisnost I_D od napona V_{GS}



Izlazna karakteristika MOSFET-a sa označenim režimima rada

